



DETAIL  
NOT TO SCALE

MR1

Future  
Development

N.E. 1/4 SEC.21  
TWP.19 - RGE.1 - W2Mer.

Plan AA3550 18

Plan 17 64R14447  
URBAN AVENUE

Plan 32 64R14447  
GREEN AVENUE

Plan 33 67R35864  
SASKTEL PEDESTAL  
67R35864

SASKTEL PEDESTAL &  
SASKPOWER CANISTER

**NOTE:**  
Prior to any construction Sask First Call must be contacted to locate & confirm any underground facilities that may exist.  
Underground facilities shown on this plan are those that could be found and located. Other facilities may exist, which we were unaware of or unable to locate.

PLAN OF PROPOSED SUBDIVISION  
OF PART OF  
NE.1/4 SECTION 21  
TWP.19 - RGE.1 - W.2M.  
AND ALL OF  
PARCEL B, PLAN 102177165  
NE.1/4 SECTION 21  
TWP.19 - RGE.1 - W.2M.  
RM OF FERTILE BELT NO. 183  
M.M. VANSTONE, S.L.S.  
2014

OWNER: BRYLEE DEVELOPMENTS LTD.

COMMUNITY PLANNING

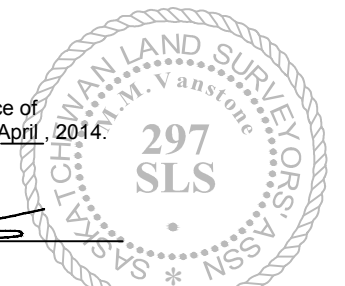
Drawn by: JBW Scale 1:3000 Project No.: 10594  
Preliminary Survey: April 7, 2014

REVISION: 1.) Added Existing Utility Info. Jun.18, 2014  
1.) Updated Proposed Plan Mar.05, 2015

NOTE:  
- Measurements are in metres and decimals thereof.  
Measurements shown are approximate & may vary by up to 5m subject to final survey.  
- Area to be registered is outlined in bold dashed line and contains 19.23 ha. (47.50 acs.)

Dated at Regina in the Province of  
Saskatchewan this 8th day of April, 2014.

*M.M. Vanstone*  
Saskatchewan Land Surveyor



**20/20**  
GEOMATICS  
Phone: 306-569-2020  
Fax: 306-569-2026  
Regina, SK  
www.2020geomatics.com

**A**  
Plan 102177165

SASKPOWER CANISTER  
SASKENERGY MARKER

UNABLE TO LOCATE  
N-S SASKTEL LINE

SASKTEL CANISTER

MR1

0.44 ha.  
(1.09 acs.)

SEE DETAIL

SUMMER STREET (ROAD ALLOWANCE)

**C**

**B**

**A**

Plan 87R15812

Plan BK1517

Plan 82R50401

21  
19-1-2